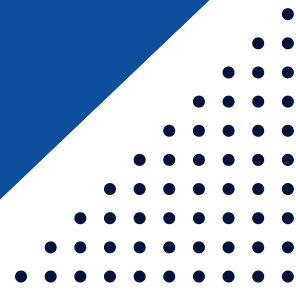




IPACK SOLUTIONS
INNORACKS



INNORACKS CATALOGUE 2026

ENGINEERED FOR MODERN INFRASTRUCTURE

Comprehensive catalog showcasing innovative, high-quality products tailored for diverse customer needs.

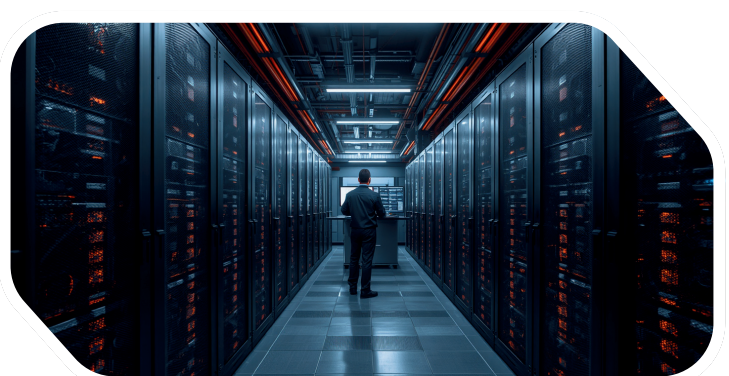
Welcome to Our Product Catalogue

Explore Innoracks' complete range of engineered infrastructure solutions, designed to meet the evolving demands of modern IT, networking, telecom, and industrial environments. Our product portfolio combines durability, precision manufacturing, and innovative design to deliver reliable performance across every application. From server racks and outdoor cabinets to accessories and power solutions, Innoracks is committed to building infrastructure that stands the test of time.

About Us

At Innoracks, we are dedicated to manufacturing **premium server racks**, wall mount enclosures, **outdoor cabinets**, **accessories**, **chrome carts**, and **power solutions** designed for today's evolving infrastructure requirements. Our products are engineered with a focus on quality, reliability, and performance, supporting data centers, enterprises, telecom networks, educational institutions, and industrial facilities across multiple sectors.

Driven by innovation and engineering excellence, Innoracks delivers infrastructure solutions that seamlessly combine reliability, functionality, and long-term performance. Our diverse product portfolio supports data centers, corporate enterprises, telecom networks, educational institutions, and industrial operations with scalable, future-ready systems designed to meet evolving business and technology requirements. Through continuous improvement, technical expertise, and a customer-centric approach, we remain committed to providing dependable solutions that empower organizations to build stronger and more efficient infrastructure ecosystems.





DVR / Networking Racks

o o o o

Available options (May Vary)

- 2U DVR Rack 550x300
- 2U DVR Rack 400x300
- 2U DVR Rack 400x350
- 2U DVR Rack 450x350

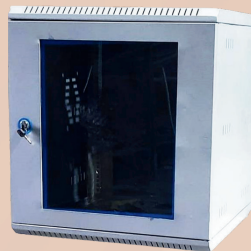


Available options (May Vary)

- 4U DVR Rack 550x400
- 4U DVR Rack 550x400
- 4U DVR Rack 550x500
- 4U DVR Rack 550x600
- 4U DVR Rack 600x600

Available options (May Vary)

- 6U DVR Rack 550x400
- 6U DVR Rack 550x450
- 6U DVR Rack 550x500
- 6U DVR Rack 550x600
- 6U DVR Rack 600x600



Available options (May Vary)

- 9U DVR Rack 550x350
- 9U DVR Rack 550x400
- 9U DVR Rack 550x450
- 9U DVR Rack 550x500
- 9U DVR Rack 550x600
- 9U DVR Rack 600x600

Available options (May Vary)

- 12U DVR Rack 550x350
- 12U DVR Rack 550x400
- 12U DVR Rack 550x450
- 12U DVR Rack 550x500
- 12U DVR Rack 550x600
- 12U DVR Rack 600x600



Available options (May Vary)

- 15U DVR Rack 550x350
- 15U DVR Rack 550x400
- 15U DVR Rack 550x450
- 15U DVR Rack 550x500
- 15U DVR Rack 550x600
- 15U DVR Rack 600x600

*The products and dimensions presented in this catalogue represent only a selection of the extensive range offered by Innoracks. We manufacture and supply solutions in numerous sizes, configurations, finishes, and application-specific designs to cater to diverse industrial, commercial, telecom, and enterprise requirements. Customized products can be developed to match your exact technical specifications and project needs. For bespoke solutions, additional variants, and detailed quotations, please get in touch with our team—we would be delighted to assist you.



Server Racks

Innoracks Server Racks are engineered to provide secure, scalable, and efficient infrastructure solutions for modern IT and networking environments. Designed with robust construction, optimized ventilation, and intelligent cable management, our racks support a wide range of applications, from enterprise server rooms to large-scale data centers. Available in multiple sizes and configurations, they deliver reliability, accessibility, and flexibility to meet diverse installation requirements while ensuring long-term performance and equipment protection.



Available options (May Vary)
 18U Server Rack 600x600
 18U Server Rack 600x800
 18U Server Rack 600x1000
 18U Server Rack 800x800
 18U Server Rack 800x1000

Available options (May Vary)
 22U Server Rack 600x600
 22U Server Rack 600x800
 22U Server Rack 600x1000
 22U Server Rack 800x800
 22U Server Rack 800x1000



Available options (May Vary)
 36U Server Rack 600x600
 36U Server Rack 600x800
 36U Server Rack 600x1000
 36U Server Rack 600x1200
 36U Server Rack 800x800
 36U Server Rack 800x1000

Available options (May Vary)
 42U Server Rack 600x600
 42U Server Rack 600x800
 42U Server Rack 600x1000
 42U Server Rack 600x1200
 42U Server Rack 800x1000
 42U Server Rack 800x800



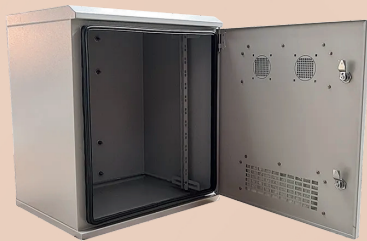


Outdoor Racks

Innoracks Outdoor Racks are purpose-built to protect critical networking, telecom, CCTV, and electrical equipment in outdoor installations. Manufactured with rugged, weather-resistant construction, these cabinets provide superior protection against dust, moisture, heat, and harsh environmental conditions while ensuring secure access, efficient ventilation, and long-term operational reliability. Available in various sizes and configurations, they are ideal for telecom infrastructure, smart city projects, surveillance systems, industrial facilities, and outdoor networking applications.

Available options (May Vary)

- 6U Outdoor Rack 550x300
- 6U Outdoor Rack 550x350
- 6U Outdoor Rack 550x400
- 6U Outdoor Rack 550x600
- 6U Outdoor Rack 600x600



Available options (May Vary)

- 12U Outdoor Rack 600x600
- 12U Outdoor Rack 600x800
- 12U Outdoor Rack 600x1000
- 12U Outdoor Rack 800x800
- 12U Outdoor Rack 800x1000

Available options (May Vary)

- 15U Outdoor Rack 600x600
- 15U Outdoor Rack 600x800
- 15U Outdoor Rack 600x1000
- 15U Outdoor Rack 800x800
- 15U Outdoor Rack 800x1000



Available options (May Vary)

- 18U Outdoor Rack 600x600
- 18U Outdoor Rack 600x800
- 18U Outdoor Rack 600x1000
- 18U Outdoor Rack 800x800
- 18U Outdoor Rack 800x1000

Available options (May Vary)

- 20U Outdoor Rack 600x600
- 20U Outdoor Rack 600x800
- 20U Outdoor Rack 600x1000
- 20U Outdoor Rack 800x800
- 20U Outdoor Rack 800x1000





Open Racks

Innoracks Outdoor Racks are purpose-built to protect critical networking, telecom, CCTV, and electrical equipment in outdoor installations. Manufactured with rugged, weather-resistant construction, these cabinets provide superior protection against dust, moisture, heat, and harsh environmental conditions while ensuring secure access, efficient ventilation, and long-term operational reliability. Available in various sizes and configurations, they are ideal for telecom infrastructure, smart city projects, surveillance systems, industrial facilities, and outdoor networking applications.



Innoracks Open Frame and Enclosed Server Racks are engineered for reliable IT infrastructure deployment, offering excellent accessibility, secure equipment housing, efficient airflow, and organized cable management. Available in 18U, 22U, 27U, 36U, 42U, and 47U configurations, with customized dimensions and specifications to meet diverse enterprise, telecom, and data center requirements.



Vertical Cable Manager – Designed for efficient cable routing and organization within server racks, ensuring improved airflow, simplified maintenance, and a clean, professional infrastructure setup. Its robust construction helps reduce cable clutter, enhances accessibility during servicing, and protects network connections for long-term reliability. Available in 18U, 22U, 27U, 36U, and 42U variants, with customized sizes offered to meet specific installation and project requirements.



Wall Mount Network Rack – A compact and sturdy solution for housing networking equipment, offering easy access, efficient space utilization, and reliable cable management. Designed for offices, surveillance systems, and telecom installations, it ensures organized infrastructure deployment with quick maintenance access. Available in 4U, 6U, 9U, 12U, and 15U configurations, with custom dimensions available to suit diverse installation requirements.



Open Frame Wall Mount Rack – A lightweight and accessible mounting solution designed for efficient equipment organization, superior airflow, and hassle-free cable management. Ideal for networking, telecom, and surveillance applications, it is available in 4U, 6U, 9U, 12U, and 15U configurations, with custom sizes offered to meet specific installation requirements.



Junction Box



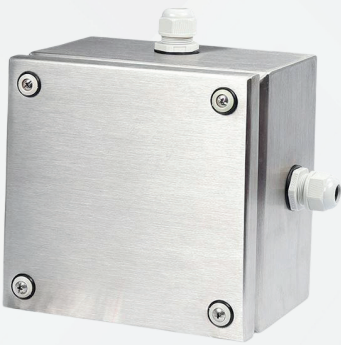
**MS Junction Box
Knockout Series**



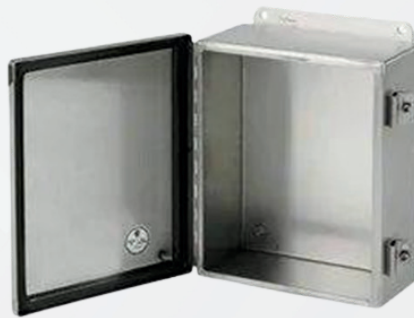
**DIN Rail Junction Box
Industrial Series**



**MS Electrical Enclosure
Single Door Series**



**SS Junction Box – IP65/IP66
Weatherproof Series**



**Aluminium Junction Box
IP65 Series**



**MS Junction Box
Lockable Series**



IP65 Mild Steel Junction Box



**Electrical Terminal
Junction Box (TB)**

Product Description

Our premium range of Junction Boxes is engineered to provide reliable protection and secure housing for electrical connections, terminal blocks, and control components. Manufactured from high-quality Mild Steel (MS), Stainless Steel (SS304/SS316), and Aluminium, these enclosures offer excellent resistance to dust, moisture, corrosion, and harsh environmental conditions.

Designed for industrial, commercial, and outdoor applications, the junction boxes feature precision construction, durable powder-coated or natural metal finishes, secure locking mechanisms, and weatherproof sealing to ensure long-lasting performance. Available in multiple sizes and IP ratings, they are ideal for electrical distribution, automation, solar systems, instrumentation, HVAC, telecommunications, and machine wiring.



Wall Mounts Racks Gallery

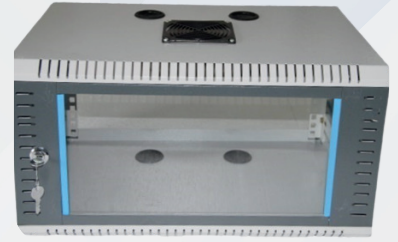
o o o o



Side Open Wall Mount Rack Cabinet



Closed Body Wall Mount Rack Cabinet



Open Frame Wall Mount Rack



front-opening Wall Mount Rack Cabinet



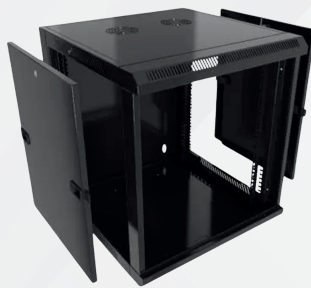
Side Open with Front door Perforated Wall Mount Rack Cabinet



Open Frame Wall Mount Rack



Wall Mount Rack Cabinet with cooling fans, PDU



Wall Mount Network Rack Swing Frame Series



Standard Wall Mount Network Rack



Wall Mount Network Rack Premium Glass Door Series



Swing Frame Wall Mount Rack Double Section Series



Single Section Wall Mount Rack



LED Wall Mounts

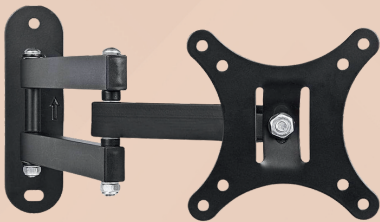
o o o o



Durable fixed wall mount designed for secure and space-efficient display installation. Built with a slim profile for a clean appearance and reliable long-term support.

Available Dimensions:

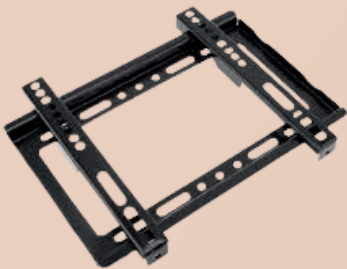
- Custom configurations available on request.
- 32" – 43" TVs / 43" – 55" TVs / 55" – 65" TVs / 65" – 75" TVs



Adjustable wall mount with flexible viewing angles and secure display support. Engineered for smooth movement, space optimization, and comfortable everyday viewing.

Available Dimensions:

- VESA-compatible mounting options available.
- 14" – 24" TVs / 24" – 32" TVs / 32" – 43" TVs / 43" – 50" TVs



Low-profile wall mount designed for secure, stable, and space-saving display installations. Its slim construction ensures a clean, modern appearance while maintaining reliable support.

Available Dimensions:

- Multiple screen-size variants available.
- 24" – 32" TVs / 32" – 43" TVs / 43" – 55" TVs / 55" – 65" TVs



Heavy-duty articulating wall mount designed for flexible, secure, and space-efficient display installations. Provides smooth extension, swivel, and tilt functionality for an optimal viewing experience.

Available Dimensions:

- Multiple screen-size variants available.
- 43" – 55" TVs / 55" – 65" TVs / 65" – 75" TVs / 75" – 85" TVs



Flexible dual-arm wall mount designed for smooth adjustment and secure display positioning. Enables effortless swivel and extension for enhanced comfort and optimized viewing angles.

Available Dimensions:

- Multiple screen-size options available.
- 32" – 43" TVs / 43" – 55" TVs / 55" – 65" TVs / 65" – 75" TVs

Crome Carts



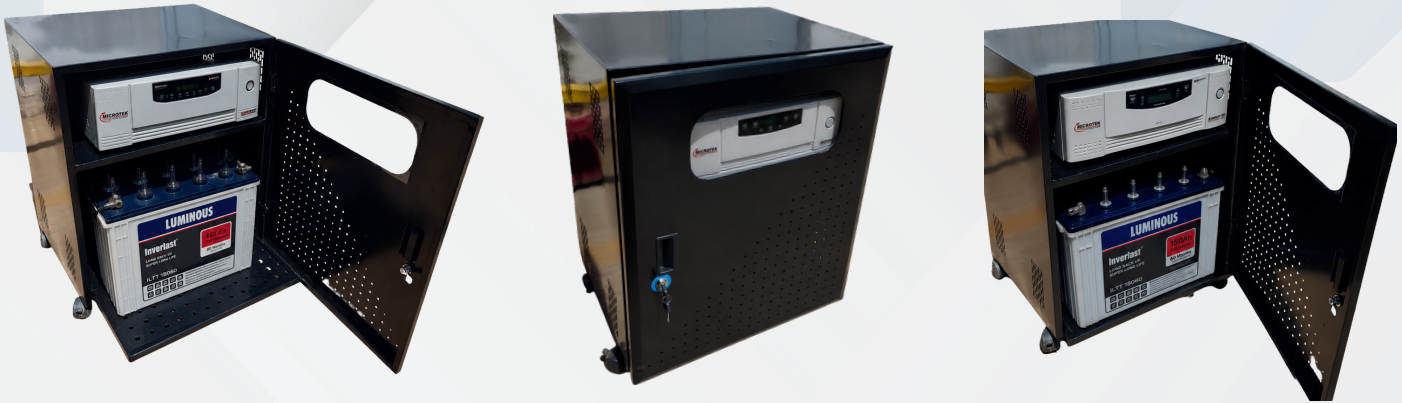
Chrome Cart (CC Series) and **Tablet Cart (TC Series)** Cabinets are designed for secure storage, charging, transportation, and efficient management of **Chromebooks, laptops, and tablets** in educational and corporate environments. Fabricated from high-quality steel, these carts feature dedicated device slots, integrated cable management, ventilated panels for heat dissipation, and lockable doors for enhanced equipment safety and organization. Their mobile, user-friendly design ensures easy access, centralized charging, and efficient device management while minimizing cable clutter.

Series	Model	Dimensions (W × D × H) in mm
CC Series	CC-20	570 × 585 × 746 mm
CC Series	CC-26	696 × 585 × 946 mm
CC Series	CC-30	570 × 583 × 1026 mm
CC Series	CC-40	585 × 575 × 1304 mm
TC Series	TC-30	630 × 526 × 876 mm
TC Series	TC-40	630 × 526 × 1188 mm





Inverter Battery Racks



Battery Rack Cabinet is designed for secure storage and organized installation of backup batteries used in UPS, telecom, solar, and power backup systems. Manufactured from high-quality steel, the cabinet offers robust construction, enhanced safety, and easy access for maintenance. Its ventilated design ensures efficient heat dissipation, while the lockable door provides added security for critical power applications.

Key Features:

- Durable heavy-duty steel construction
- Ventilated design for efficient airflow and cooling
- Secure lockable door for enhanced safety
- Easy access for battery installation and maintenance
- Ideal for **UPS, telecom, solar, and power backup systems**
- Overall Dimensions: **600 × 473 × 700 mm**



Battery Test Trolley is designed for convenient testing, charging, and maintenance of batteries in UPS, telecom, and power backup applications.

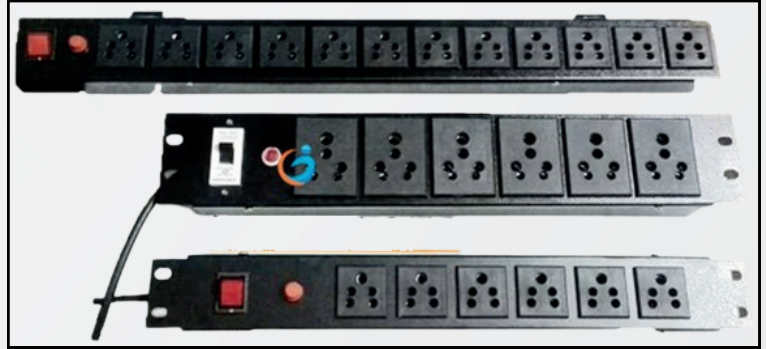
Key Features:

- Sturdy steel frame construction
- Heavy-duty castor wheels for easy mobility
- Open design for quick battery access
- Suitable for **UPS, telecom, and solar applications**
- Easy installation and maintenance access



Accessories

Power Distribution Unit (PDU)



Model Name	Model Specifications	Description
INN/PDU/001	6S X 5AMP: 6 sockets: 6 AMP	With Switch & Indicator
INN/PDU/002	6S X 15AMP: 6 sockets: 6/15AMP	With Switch & Indicator
INN/PDU/003	10S X 5AMP: 10 sockets: 6 AMP	With Switch & Indicator
INN/PDU/004	10S X 5AMP: 10 sockets: 6/15 AMP	With Switch & Indicator
INN/PDU/005	12S X 15AMP: 12 sockets: 6/15AMP	With Switch & Indicator
INN/PDU/006	10M X 15: 10 sockets: 6/15AMP	With MCB
INN/PDU/007	12M X 15 AMP: 12 sockets: 6/15AMP	With MCB

CPU Trolley



Name	Description
Color	Black, Ivory
Material	Mild Steel(powder coated)
Size(in MM)	240(L)X240(W)X150(H)
Width	Adjustable (150MM to 225MM)
Loading Capacity	20kg
Technology	Machine Cutting
Accessories	Swivel 4 Castor wheels (2 with brakes & 2 regular wheels) Rubber shock absorbers Screws & Nuts (Hardware)
Features	Lockable wheels (to station Trolley at one place) Adjustable design to fit all sizes of CPUs Easy to handle, transport & assemble Excellent finish & Durable



Accessories

o o o o



Cantilever Tray

Part Name	Model Name
INN-CNT-001	1U - 435MM (Front)
	1U - 250MM (Depth)
	Can be used from 2 TO 50U (Customization available) for all 19" maintained equipment



Shelves

Part Name	Model Name	Used In
INN-SHELF-001	375MM	RACKS 600MM X 600MM
INN-SHELF-002	425MM	RACKS 600MM X 600MM
INN-SHELF-003	475MM	RACKS 600MM X 800MM
		RACK 800MM X 800MM
INN-SHELF-004	525MM	RACKS 600MM X 800MM
		RACKS 800MM X 800MM
INN-SHELF-005	725MM	RACKS 800MM X 1000MM
INN-SHELF-006	925MM	RACKS 600MM X 1200MM
		RACKS 800MM X 1200MM



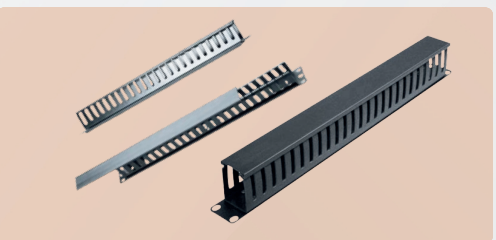
Keyboard Tray / Sliding Tray

Part Name	Model Name
INN-KBT-001	For up-to 1000MM Rack



Blank Panel

Part Name	Model Name
INN-BLANK-001	1U- Blank Panel
INN-BLANK-002	2U- Blank Panel



Cable Manager

Part Name	Model Name	Used In
INN-PVC-001	PVC Cable Manager	2U- 42U
INN-MET-002	Metallic Cable Manager	2U- 42U



Elaborate Dimensions of Products

DVR / SERVER / NETWORK RACKS

Product Part No.	Height in U	Overall Height	Usable Height	Overall Width	Usable Width	Overall Depth	Usable Depth
INN-2U-001 (550x400)	2U	155mm	100 mm	550 mm	482.6mm (19 Inch)	400mm	350 mm
INN-2U-002 (550x500)	2U	155mm	100 mm	550 mm	482.6mm (19 Inch)	500mm	450mm
INN-2U-003 (550x600)	2U	155mm	100 mm	550 mm	482.6mm (19 Inch)	600mm	550mm
INN-2U-004 (550x650)	2U	155mm	100 mm	550 mm	482.6mm (19 Inch)	650mm	590mm
INN-4U-001 (550x400)	4U	260mm	170 mm	550 mm	482.6mm (19 Inch)	400mm	360 mm
INN-4U-002 (550x500)	4U	260mm	170 mm	550 mm	482.6mm (19 Inch)	500mm	460mm
INN-4U-003 (550x600)	4U	260mm	170 mm	550 mm	482.6mm (19 Inch)	600mm	560mm
INN-4U-004 (550x650)	4U	260mm	170 mm	550 mm	482.6mm (19 Inch)	600mm	600mm
INN-6U-001 (550X400)	6U	345mm	270mm	550 mm	482.6mm (19 Inch)	400mm	360 mm
INN-6U-002 (550X500)	6U	345mm	270mm	550 mm	482.6mm (19 Inch)	500mm	460mm
INN-6U-003 (550X600)	6U	345mm	270mm	550 mm	482.6mm (19 Inch)	600mm	560mm
INN-6U-004 (550X650)	6U	345mm	270mm	550 mm	482.6mm (19 Inch)	650mm	600mm
INN-9U-001 (550X400)	9U	477mm	390mm	550mm	482.6mm (19 Inch)	400mm	360mm
INN-9U-002 (550X500)	9U	477mm	390mm	550mm	482.6mm (19 Inch)	500mm	460mm
INN-9U-003 (550X600)	9U	477mm	390mm	550mm	482.6mm (19 Inch)	600mm	560mm
INN-9U-004 (550X650)	9U	477mm	390mm	550mm	482.6mm (19 Inch)	650mm	600mm



Elaborate Dimensions of Products

DVR / SERVER / NETWORK RACKS

Product Part No.	Height in U	Overall Height	Usable Height	Overall Width	Usable Width	Overall Depth	Usable Depth
INN-12U-001 (550X400)	12U	600mm	525mm	550mm	482.6mm (19 Inch)	400mm	360mm
INN-12U-002 (550X500)	12U	600mm	525mm	550mm	482.6mm (19 Inch)	500mm	460mm
INN-12U-003 (550X600)	12U	600mm	525mm	550mm	482.6mm (19 Inch)	600mm	560mm
INN-12U-004 (550X650)	12U	600mm	525mm	550mm	482.6mm (19 Inch)	650mm	590mm
INN-15U-001 (550X400)	15U	735mm	660mm	550mm	482.6mm (19 Inch)	400mm	360mm
INN-15U-002 (550X500)	15U	735mm	660mm	550mm	482.6mm (19 Inch)	500mm	460mm
INN-15U-003 (550X600)	15U	735mm	660mm	550mm	482.6mm (19 Inch)	600mm	560mm
INN-15U-004 (550X650)	15U	735mm	660mm	550mm	482.6mm (19 Inch)	650mm	590mm
INN-17U-001 (600X600)	17U	845mm	755mm	600mm	482.6mm (19 Inch)	600mm	550mm
INN-17U-002 (600X800)	17U	955mm	755mm	600mm	482.6mm (19 Inch)	800mm	750mm
INN-17U-003 (600X1000)	17U	955mm	755mm	600mm	482.6mm (19 Inch)	1000mm	950mm
INN-17U-004 (800X800)	17U	955mm	755mm	800mm	482.6mm (19 Inch)	800mm	680mm
INN-17U-005 (800X1000)	17U	955mm	755mm	800mm	482.6mm (19 Inch)	1000mm	880mm
INN-17U-006 (600X1200)	17U	955mm	755mm	600mm	482.6mm (19 Inch)	1200mm	1150mm
INN-17U-007 (800X1200)	17U	955mm	755mm	800mm	482.6mm (19 Inch)	1200mm	1080mm



Elaborate Dimensions of Products

DVR / SERVER / NETWORK RACKS

Product Part No.	Height	Overall Height	Usable Height	Overall Width	Usable Width	Overall Depth	Usable Depth
INN-18U-001 (600X600)	18U	955mm	800mm	600mm	482.6mm (19 Inch)	600mm	480 mm
INN-18U-002 (600X800)	18U	955mm	800mm	600mm	482.6mm (19 Inch)	800mm	680 mm
INN-18U-003 (600X1000)	18U	955mm	800mm	600mm	482.6mm (19 Inch)	az	880 mm
INN-18U-004 (800X800)	18U	955mm	800mm	800mm	482.6mm (19 Inch)	800mm	680 mm
INN-18U-005 (800X1000)	18U	955mm	800mm	800mm	482.6mm (19 Inch)	1000mm	880 mm
INN-18U-006 (600X1200)	18U	955mm	800mm	600mm	482.6mm (19 Inch)	1200mm	1080 mm
INN-18U-007 (800X1200)	18U	955mm	800mm	800mm	482.6mm (19 Inch)	1200mm	1080 mm
INN-22U-001 (600x600)	22U	1185 mm	980 mm	600mm	482.6mm 19 Inch	600mm	480mm
INN-22U-002 (600x800)	22U	1185 mm	980 mm	600mm	482.6mm 19 Inch	800mm	680mm
INN-22U-003 (600x1000)	22U	1185 mm	980 mm	600mm	482.6mm 19 Inch	1000mm	880mm
INN-22U-004 (800x800)	22U	1185 mm	980 mm	800mm	482.6mm 19 Inch	800mm	680mm
INN-22U-005 (800x1000)	22U	1185 mm	980 mm	800mm	482.6mm 19 Inch	1000mm	880mm
INN-22U-006 (600x1200)	22U	1185 mm	980 mm	600mm	482.6mm 19 Inch	1200mm	1080mm
INN-22U-007 (800x1200)	22U	1185 mm	980 mm	800mm	482.6mm 19 Inch	1200mm	1080mm
INN-24U-001 (600x600)	24U	1260 mm	1065 mm	600mm	482.6mm (19 Inch)	600mm	480mm
INN-24U-002 (600x800)	24U	1260 mm	1065 mm	600mm	482.6mm (19 Inch)	800mm	680mm
INN-24U-003 (600x1000)	24U	1260 mm	1065 mm	600mm	482.6mm (19 Inch)	1000mm	880mm
INN-24U-004 (800x800)	24U	1260 mm	1065 mm	800mm	482.6mm (19 Inch)	800mm	680mm
INN-24U-005 (800x1000)	24U	1260 mm	1065 mm	800mm	482.6mm (19 Inch)	1000m	880mm
INN-24U-006 (600x1200)	24U	1260 mm	1065 mm	600mm	482.6mm (19 Inch)	1200mm	1080mm
INN-24U-007 (800x1200)	24U	1260 mm	1065 mm	800mm	482.6mm (19 Inch)	1200mm	1080mm



Elaborate Dimensions of Products

DVR / SERVER / NETWORK RACKS

Product Part No.	Height in U	Overall Height	Usable Height	Overall Width	Usable Width	Overall Depth	Usable Depth
INN-27U-001 (600x600)	27U	1290 mm	1200 mm	600mm	482.6mm 19 Inch	600mm	480mm
INN-27U-002 (600x800)	27U	1290 mm	1200 mm	600mm	482.6mm 19 Inch	800mm	680mm
INN-27U-003 (600x1000)	27U	1290 mm	1200 mm	600mm	482.6mm 19 Inch	1000mm	880mm
INN-27U-004 (800x800)	27U	1290 mm	1200 mm	800mm	482.6mm 19 Inch	800mm	680mm
INN-27U-005 (800x1000)	27U	1290 mm	1200 mm	800mm	482.6mm 19 Inch	1000mm	880mm
INN-27U-006 (600x1200)	27U	1290 mm	1200 mm	600mm	482.6mm 19 Inch	1200mm	1080mm
INN-27U-007 (800x1200)	27U	1290 mm	1200 mm	800mm	482.6mm 19 Inch	1200mm	1080mm
INN-32U-001 (600X600)	32U	1512mm	1425mm	550mm	482.6mm (19 Inch)	600mm	480 mm
INN-32U-002 (600X800)	32U	1512mm	1425mm	550mm	482.6mm (19 Inch)	800mm	680mm
INN-32U-003 (600X1000)	32U	1512mm	1425mm	550mm	482.6mm (19 Inch)	1000mm	880mm
INN-32U-004 (800X800)	32U	1512mm	1425mm	550mm	482.6mm (19 Inch)	800mm	680mm
INN-32U-005 (800X1000)	32U	1512mm	1425mm	550mm	482.6mm (19 Inch)	1000mm	880mm
INN-32U-006 (600X1200)	32U	1512mm	1425mm	550mm	482.6mm (19 Inch)	1200mm	1080mm
INN-32U-007 (800X1200)	32U	1512mm	1425mm	550mm	482.6mm (19 Inch)	1200mm	1080mm
INN-36U-001 (600X600)	36U	1690mm	1605mm	600mm	482.6mm (19 Inch)	600mm	480 mm
INN-36U-002 (600X800)	36U	1690mm	1605mm	600mm	482.6mm (19 Inch)	800mm	680mm
INN-36U-003 (600X1000)	36U	1690mm	1605mm	600mm	482.6mm (19 Inch)	1000mm	880mm
INN-36U-004 (800X800)	36U	1690mm	1605mm	600mm	482.6mm (19 Inch)	800mm	680mm
INN-36U-005 (800X1000)	36U	1690mm	1605mm	550mm	482.6mm (19 Inch)	1000mm	880mm



Elaborate Dimensions of Products

DVR / SERVER / NETWORK RACKS

Product Part No.	Height in U	Overall Height	Usable Height	Overall Width	Usable Width	Overall Depth	Usable Depth
INN-36U-006 (600X1200)	36U	1807mm	1605mm	550mm	482.6mm (19 Inch)	1200mm	1080mm
INN-36U-007 (800X1200)	36U	1807mm	1605mm	550mm	482.6mm (19 Inch)	1200mm	1080mm
INN-42U-001 (600X600)	42U	1957mm	1885mm	600mm	482.6mm (19 Inch)	600mm	480 mm
INN-42U-002 (600X800)	42U	1957mm	1870mm	600mm	482.6mm (19 Inch)	800mm	680mm
INN-42U-003 (600X1000)	42U	1957mm	1870mm	600mm	482.6mm (19 Inch)	1000mm	880mm
INN-42U-004 (800X800)	42U	1957mm	1870mm	600mm	482.6mm (19 Inch)	800mm	680mm
INN-42U-005 (800X1000)	42U	1957mm	1870mm	600mm	482.6mm (19 Inch)	1000mm	880mm
INN-42U-006 (600X1200)	42U	1957mm	1870mm	600mm	482.6mm (19 Inch)	1200mm	1080mm
INN-42U-007 (800X1200)	42U	1957mm	1870mm	600mm	482.6mm (19Inch)	1200mm	1080mm
INN-45U-001 (600X600)	42U	2090mm	2005mm	600mm	482.6mm (19 Inch)	600mm	480 mm
INN-45U-002 (600X800)	42U	2090mm	2005mm	600mm	482.6mm (19 Inch)	800mm	680mm
INN-45U-003 (600X1000)	42U	2090mm	2005mm	600mm	482.6mm (19 Inch)	1000mm	880mm
INN-45U-004 (800X800)	42U	2090mm	2005mm	600mm	482.6mm (19 Inch)	800mm	680mm
INN-45U-005 (800X1000)	42U	2090mm	2005mm	600mm	482.6mm (19 Inch)	1000mm	880mm
INN-45U-006 (600X1200)	42U	2090mm	2005mm	600mm	482.6mm (19 Inch)	1200mm	1080mm
INN-45U-007 (800X1200)	42U	2090mm	2005mm	600mm	482.6mm (19Inch)	1200mm	1080mm



Elaborate Dimensions of Products

DVR / SERVER / NETWORK RACKS

Product Part No.	Height in U	Overall Height	Usable Height	Overall Width	Usable Width	Overall Depth	Usable Depth
INN-48U-001 (600X600)	48U	2090mm	2125mm	600mm	482.6mm (19 Inch)	600mm	480 mm
INN-48U-002 (600X800)	48U	2090mm	1870mm	600mm	482.6mm (19 Inch)	800mm	680mm
INN-48U-003 (600X1000)	48U	2090mm	1870mm	600mm	482.6mm (19 Inch)	1000mm	880mm
INN-48U-004 (800X800)	48U	2090mm	1870mm	600mm	482.6mm (19 Inch)	800mm	680mm
INN-48U-005 (800X1000)	48U	2090mm	1870mm	600mm	482.6mm (19 Inch)	1000mm	880mm
INN-48U-006 (600X1200)	48U	2090mm	1870mm	600mm	482.6mm (19 Inch)	1200mm	1080mm
INN-48U-007 (800X1200)	48U	2090mm	1870mm	600mm	482.6mm (19Inch)	1200mm	1080mm



Elaborate Dimensions of Products

OUTDOOR RACKS

Product Part No.	Height in U	Overall Height	Usable Height	Overall Width	Usable Width	Overall Depth	Usable Depth
INN-4U-001	4	270MM	180MM	550MM	482.6MM (19 INCH)	400MM	350MM
INN-4U-002	4	270MM	180MM	550MM	482.6MM (19 INCH)	500MM	450MM
INN-4U-003	4	270MM	180MM	550MM	482.6MM (19 INCH)	550MM	500MM
INN-4U-004	4	270MM	180MM	550MM	482.6MM (19 INCH)	600MM	550MM
INN-4U-005	4	270MM	180MM	600MM	482.6MM (19 INCH)	600MM	550MM
INN-6U-001	6	360MM	270MM	550MM	482.6MM (19 INCH)	400MM	350MM
INN-6U-002	6	360MM	270MM	550MM	482.6MM (19 INCH)	500MM	450MM
INN-6U-003	6	360MM	270MM	550MM	482.6MM (19 INCH)	550MM	500MM
INN-6U-004	6	360MM	270MM	550MM	482.6MM (19 INCH)	600MM	550MM
INN-6U-005	6	360MM	270MM	600MM	482.6MM (19 INCH)	600MM	550MM
INN-9U-001	9	490MM	405MM	550MM	482.6MM (19 INCH)	400MM	350MM
INN-9U-002	9	490MM	405MM	550MM	482.6MM (19 INCH)	500MM	450MM
INN-9U-003	9	490MM	405MM	550MM	482.6MM (19 INCH)	550MM	500MM
INN-9U-004	9	490MM	405MM	550MM	482.6MM (19 INCH)	600MM	550MM
INN-9U-005	9	490MM	405MM	600MM	482.6MM (19 INCH)	600MM	550MM
INN-12U-001	12	627MM	540MM	550MM	482.6MM (19 INCH)	400MM	350MM
INN-12U-002	12	627MM	540MM	550MM	482.6MM (19 INCH)	500MM	450MM
INN-12U-003	12	627MM	540MM	550MM	482.6MM (19 INCH)	550MM	500MM
INN-12U-004	12	627MM	540MM	550MM	482.6MM (19 INCH)	600MM	550MM
INN-12U-005	12	627MM	540MM	600MM	482.6MM (19 INCH)	600MM	550MM



Elaborate Dimensions of Products

OUTDOOR RACKS

Product Part No.	Height in U	Overall Height	Usable Height	Overall Width	Usable Width	Overall Depth	Usable Depth
INN-15U-001	15	760MM	670MM	550MM	482.6MM (19 INCH)	400MM	350MM
INN-15U-002	15	760MM	670MM	550MM	482.6MM (19 INCH)	500MM	450MM
INN-15U-003	15	760MM	670MM	550MM	482.6MM (19 INCH)	550MM	500MM
INN-15U-004	15	760MM	670MM	550MM	482.6MM (19 INCH)	600MM	550MM
INN-15U-005	15	760MM	670MM	600MM	482.6MM (19 INCH)	600MM	550MM
INN-17U-001	17	1012MM	730MM	600MM	482.6MM (19 INCH)	600MM	560MM
INN-17U-002	17	1012MM	730MM	600MM	482.6MM (19 INCH)	800MM	760MM
INN-17U-003	17	1012MM	730MM	600MM	482.6MM (19 INCH)	1000MM	960MM
INN-17U-004	17	1012MM	730MM	800MM	482.6MM (19 INCH)	800MM	760MM
INN-17U-005	17	1012MM	730MM	800MM	482.6MM (19 INCH)	1000MM	960MM
INN-20U-001	20	1145MM	860MM	600MM	482.6MM (19 INCH)	600MM	560MM
INN-20U-002	20	1145MM	860MM	600MM	482.6MM (19 INCH)	800MM	760MM
INN-20U-003	20	1145MM	860MM	600MM	482.6MM (19 INCH)	1000MM	960MM
INN-20U-004	20	1145MM	860MM	800MM	482.6MM (19 INCH)	800MM	760MM
INN-20U-005	20	1145MM	860MM	800MM	482.6MM (19 INCH)	1000MM	960MM
INN-22U-001	22	1235MM	955MM	600MM	482.6MM (19 INCH)	600MM	560MM
INN-22U-002	22	1235MM	955MM	600MM	482.6MM (19 INCH)	800MM	760MM
INN-22U-003	22	1235MM	955MM	600MM	482.6MM (19 INCH)	1000MM	960MM
INN-22U-004	22	1235MM	955MM	800MM	482.6MM (19 INCH)	800MM	760MM
INN-22U-005	22	1235MM	955MM	800MM	482.6MM (19 INCH)	1000MM	960MM



Elaborate Dimensions of Products

OUTDOOR RACKS

Product Part No.	Height in U	Overall Height	Usable Height	Overall Width	Usable Width	Overall Depth	Usable Depth
INN-27U-001	27	1457MM	1175MM	600MM	482.6MM (19 INCH)	600MM	560MM
INN-27U-002	27	1457MM	1175MM	600MM	482.6MM (19 INCH)	800MM	760MM
INN-27U-003	27	1457MM	1175MM	600MM	482.6MM (19 INCH)	1000MM	960MM
INN-27U-004	27	1457MM	1175MM	800MM	482.6MM (19 INCH)	800MM	760MM
INN-27U-005	27	1457MM	1175MM	800MM	482.6MM (19 INCH)	1000MM	960MM
INN-32U-001	32	1680MM	1400MM	600MM	482.6MM (19 INCH)	600MM	560MM
INN-32U-002	32	1680MM	1400MM	600MM	482.6MM (19 INCH)	800MM	760MM
INN-32U-003	32	1680MM	1400MM	600MM	482.6MM (19 INCH)	1000MM	960MM
INN-32U-004	32	1680MM	1400MM	800MM	482.6MM (19 INCH)	800MM	760MM
INN-32U-005	32	1680MM	1400MM	800MM	482.6MM (19 INCH)	1000MM	960MM
INN-36U-001	36	1860MM	1580MM	600MM	482.6MM (19 INCH)	600MM	560MM
INN-36U-002	36	1860MM	1580MM	600MM	482.6MM (19 INCH)	800MM	760MM
INN-36U-003	36	1860MM	1580MM	600MM	482.6MM (19 INCH)	1000MM	960MM
INN-36U-004	36	1860MM	1580MM	600MM	482.6MM (19 INCH)	1200MM	1160MM
INN-36U-005	36	1860MM	1580MM	800MM	482.6MM (19 INCH)	800MM	760MM
INN-36U-006	36	1860MM	1580MM	800MM	482.6MM (19 INCH)	1000MM	960MM
INN-42U-001	42	2125MM	1845MM	600MM	482.6MM (19 INCH)	600MM	560MM
INN-42U-002	42	2125MM	1845MM	600MM	482.6MM (19 INCH)	800MM	760MM
INN-42U-003	42	2125MM	1845MM	600MM	482.6MM (19 INCH)	1000MM	960MM
INN-42U-004	42	2125MM	1845MM	600MM	482.6MM (19 INCH)	1200MM	1160MM



Elaborate Dimensions of Products

OUTDOOR RACKS

Product Part No.	Height in U	Overall Height	Usable Height	Overall Width	Usable Width	Overall Depth	Usable Depth
INN-42U-005	42	2125MM	1845MM	800MM	482.6MM (19 INCH)	800MM	760MM
INN-42U-006	42	2125MM	1845MM	800MM	482.6MM (19 INCH)	1000MM	960MM
INN-45U-001	45	2258MM	1970MM	600MM	482.6MM (19 INCH)	600MM	560MM
INN-45U-002	45	2258MM	1970MM	600MM	482.6MM (19 INCH)	800MM	760MM
INN-45U-003	45	2258MM	1970MM	600MM	482.6MM (19 INCH)	1000MM	960MM
INN-45U-004	45	2258MM	1970MM	600MM	482.6MM (19 INCH)	1200MM	1160MM
INN-45U-005	45	2258MM	1970MM	800MM	482.6MM (19 INCH)	800MM	760MM
INN-45U-006	45	2258MM	1970MM	800MM	482.6MM (19 INCH)	1000MM	960MM
INN-48U-001	48	2392MM	2110MM	600MM	482.6MM (19 INCH)	600MM	560MM
INN-48U-002	48	2392MM	2110MM	600MM	482.6MM (19 INCH)	800MM	760MM
INN-48U-003	48	2392MM	2110MM	600MM	482.6MM (19 INCH)	1000MM	960MM
INN-48U-004	48	2392MM	2110MM	600MM	482.6MM (19 INCH)	1200MM	1160MM
INN-48U-005	48	2392MM	2110MM	800MM	482.6MM (19 INCH)	800MM	760MM
INN-48U-006	48	2392MM	2110MM	800MM	482.6MM (19 INCH)	1000MM	960MM

WANT TO KNOW MORE? CONTACT US

Thank you for exploring the Innoracks product portfolio. We take pride in delivering reliable, innovative, and customized infrastructure solutions that empower businesses across enterprise, telecom, industrial, and commercial sectors. The products featured in this catalogue represent only a part of our extensive offerings, and we welcome opportunities to develop solutions tailored to your specific requirements. Connect with our team to discuss your project and receive a customized quotation.



+91 981-745-5686 / 981-233-8155



arun.singh@ipacksolutions.in



33, 1/2/1, Shahpur Road Vill. Sikri, Ballabgarh
Faridabad, HR, 121004

